

Also at:
Slough
Langley

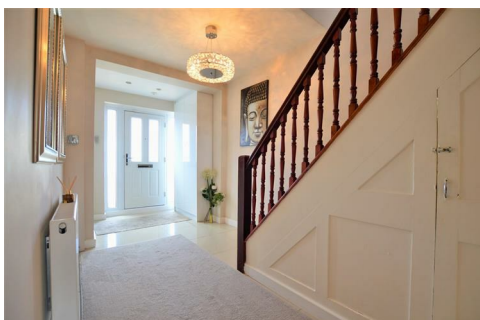


Gloucester Avenue, Slough, SL1 3AY

£2,500 PCM

FOUR BEDROOM SEMI DETACHED FAMILY HOME - AVAILABLE END OF JULY

This four bedroom semi detached family home is beautifully presented throughout and offered furnished. The property benefits from spacious lounge, modern downstairs shower room, modern fitted open plan kitchen with doors leading to rear garden, outbuilding, first floor comprises of modern family bathroom, three bedrooms, two with built in wardrobes, stairs leading to second floor master bedroom with built in wardrobes and modern shower room, Off street parking, gas central heating and double glazing. This property is convenient located close to local shops and within walking distance to Hershel Grammar School.



Gloucester Avenue, Slough, Berkshire, SL1 3AY



- Four Bedroom Modern Family Home
- Three Bath/Shower Rooms
- Driveway Parking
- Beautifully Presented
- Furnished
- Available 25/7/22
- 1 Weeks Reservation Deposit Required
- 5 Week Deposit Required
- Council Tax Band: D £1850.09
- EPC: TBC



Energy Efficiency Rating		
	Current	Potential
Very energy efficient - lower running costs		
(92 plus) A		
(81-91) B		
(69-80) C		
(55-68) D		
(39-54) E		
(21-38) F		
(1-20) G		
Not energy efficient - higher running costs		
England & Wales		
EU Directive 2002/91/EC		

Environmental Impact (CO ₂) Rating		
	Current	Potential
Very environmentally friendly - lower CO ₂ emissions		
(92 plus) A		
(81-91) B		
(69-80) C		
(55-68) D		
(39-54) E		
(21-38) F		
(1-20) G		
Not environmentally friendly - higher CO ₂ emissions		
England & Wales		
EU Directive 2002/91/EC		